

**CABINET ELEVATIONS**  
SCALE: 1/4" = 1'-0"

**LEGEND**

○ REQUIRED LIGHT	□ DUPLEX OUTLET	■ BEARING PONE LOCATION (PROVIDE NO. 8 REINFORCING BARS PER 16" ON CENTER)
○ REQUIRED DIRECTIONAL LIGHT FIXTURE	□ CEILING MOUNTED DUPLEX OUTLET	□ 4" X 4" ROOF HANG DOWN VALLEY OR ROOF DOOR TO BEARING PONE ON WALL BELOW TRUCK UP FROM UNIT
○ WALL MOUNTED LIGHT	□ FLOOR MOUNTED DUPLEX OUTLET	□ BEARING WALL SUPPORTING STRUCTURE ABOVE
□ SURFACE MOUNT LIGHT	□ TELEPHONE OUTLET	□ 4" X 8" FOR BEARING WALL PER CODE REQUIREMENTS PER 12" X 2" SUPPORT PER 16" ON CENTER
□ FLOOD LIGHT	□ DATA OUTLET	□ CHIMNEY BRICK PATTERN BEARING WALL
□ SURFACE LIGHT (FLUORESCENT)	□ TELEVISION OUTLET	
□ REQUIRED EXHAUST FAN (VENT TO THE EXTERIOR)	□ SINKER LOCATION	
□ CEILING FAN	□ BRACK / CO. DETECTOR (SEE GENERAL NOTES FOR OTHER TYPES)	
	□ POINT LOAD FROM ABOVE	

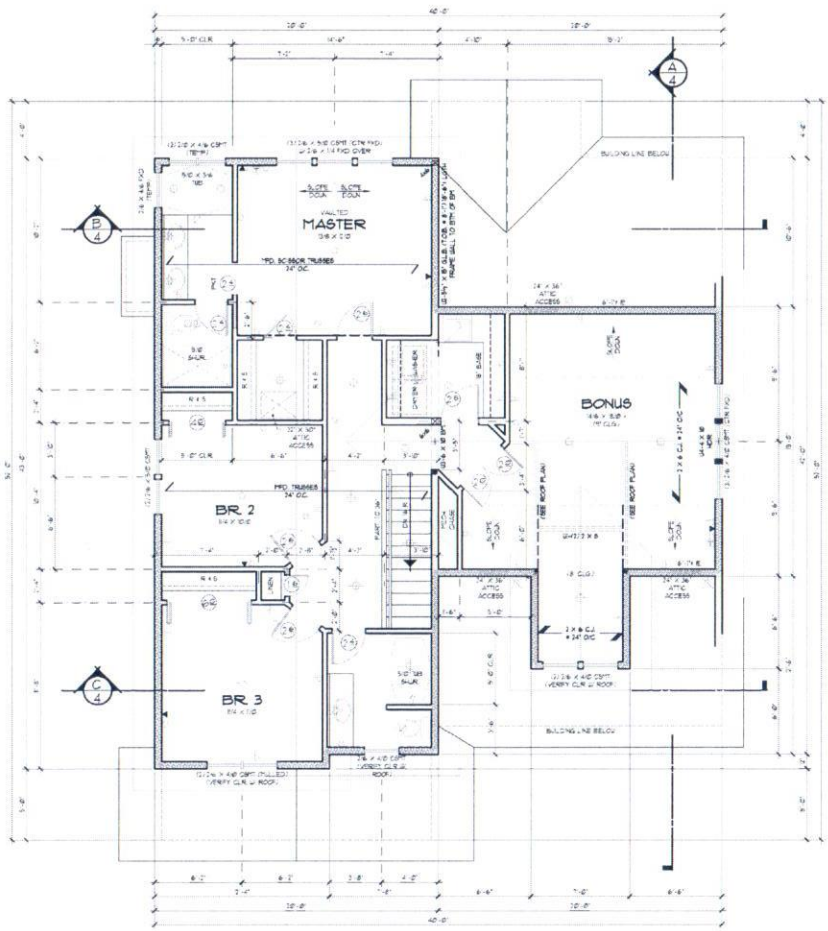
**ENERGY ENVELOPE KEY**

---	BAULK IN G.C. WALL
---	FOUNDATION WALL
---	SEE SHEET 05 FOR MAXIMUM VALUES

**C.O. DET. LOCATION**

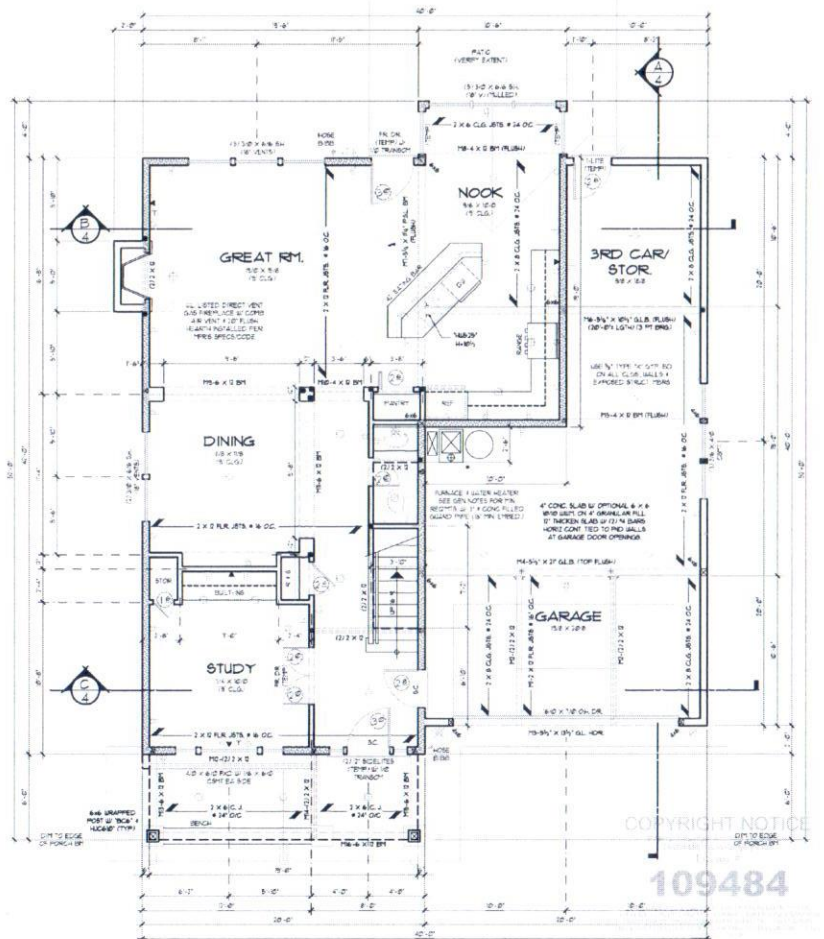
CONCRETE FLOOR IS SHOWN WALL BE LOCATED IN A BEARING WALL OR NEAR CENTER OF THE BEARING DOOR AT EVERY FLOOR LEVEL IN BEDROOMS

SEE SHEET 05 FOR ADDL. INFO.



**UPPER FLOOR PLAN**  
SCALE: 1/4" = 1'-0"

IF LATERAL ENGINEERING IS REQUIRED, REFER TO ENGINEERING SHEETS FOR LATERAL SPECIFICATIONS



**MAIN FLOOR PLAN**  
SCALE: 1/4" = 1'-0"

IF LATERAL ENGINEERING IS REQUIRED, REFER TO ENGINEERING SHEETS FOR LATERAL SPECIFICATIONS

COPYRIGHT NOTICE  
109484